

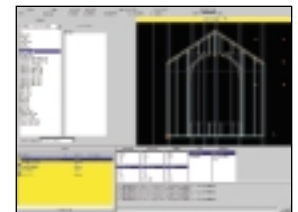
# Virtek • LTG (Laser Template Generator)

MAKES PANEL CONSTRUCTION AS EASY AS 1-2-3



Virtek LTG projects the location of studs, headers, sheathing, nailing pattern, sub-components, openings, and inserts with accuracy of  $\pm 1/16$ ". Workers see how to assemble panels before they begin.

Project templates up to 14' x 20'. Unlimited panel size can be achieved using multiple laser projectors.



Easy to use software allows workers to select wall panel and layers to project on the table.

**VIRTEK**

## EASY TO USE

The Virtek LTG system makes panel manufacturing as easy as 1-2-3. There's no need to refer to blueprints or use a measuring tape, so even the most complicated wall or floor panel can be built in minutes. The system projects a laser template of the panel members onto the work surface, showing workers how to assemble panels and sub-components.

## HIGHER THROUGHPUT

Virtek LTG eliminates the need to pre-mark top and bottom plates. The system identifies placement location for studs, headers, sheathing, nailing pattern, sub-components, openings, and inserts with  $\pm 1/16$ " accuracy. The result is higher throughput and improved construction quality – employing less skilled labor on the same table you use today.

**FLEXIBLE SOFTWARE**

The software streamlines panel manufacturing by guiding workers through assembly. Virtek LTG interfaces with leading panel design software programs and AutoCAD®. Engineering changes between design and manufacturing can be quickly communicated.

**SAVE TIME AND MONEY**

The Virtek LTG system not only reduces your production time, but also saves you money.

The system enables you to:

- Reduce training and supervision costs
- Identify incorrectly cut or picked lumber instantly
- Minimize operator errors that result in rework
- Recall previous designs to rebuild damaged panels
- Maximize your computerized panel drafting investment

**SYSTEM SPECIFICATIONS**

- Position Accuracy . . . . . ±1/16" (0.062") over 14' x 20' area
- Laser Line Width . . . . . 0.035" to 0.045"
- Laser Device & Output . . . . . Visible laser diode device with maximum 5mW output
- Laser Class . . . . . Class IIIA, meeting the 21CFR 1040 standard for CDRH certification in North America  
Class 2M, meeting the 60825-1:1993+A1:1997+A2:2001 for CE certification in Europe
- Projection Systems . . . . . Fixed-position systems – maximum 8 lasers per system
- Computer System . . . . . PC, 17" SVGA monitor, keyboard and mouse
- Remote Control . . . . . Standard
- Operating System . . . . . Windows®
- Power Requirements . . . . . 120V 60Hz or 230V 50Hz
- Agency Approvals . . . . . UL/CSA and CE
- Customer Support . . . . . One-year, all-inclusive, warranty on hardware and software. Extended support options available.



**To learn more about how Virtek LTG can maximize efficiency, increase quality, and reduce the costs of manufacturing wall and floor panels call 1-800-684-7835 or e-mail [virtekltg@virtek.ca](mailto:virtekltg@virtek.ca)**



785 Bridge Street, Waterloo, Ontario  
 Canada N2V 2K1  
 Toll Free: 1.800.684.7835  
 Tel: (+1) 519.746.7190  
 Fax: (+1) 519.746.3383  
[www.virtek.ca](http://www.virtek.ca)

\*Specifications subject to change due to continual improvements.