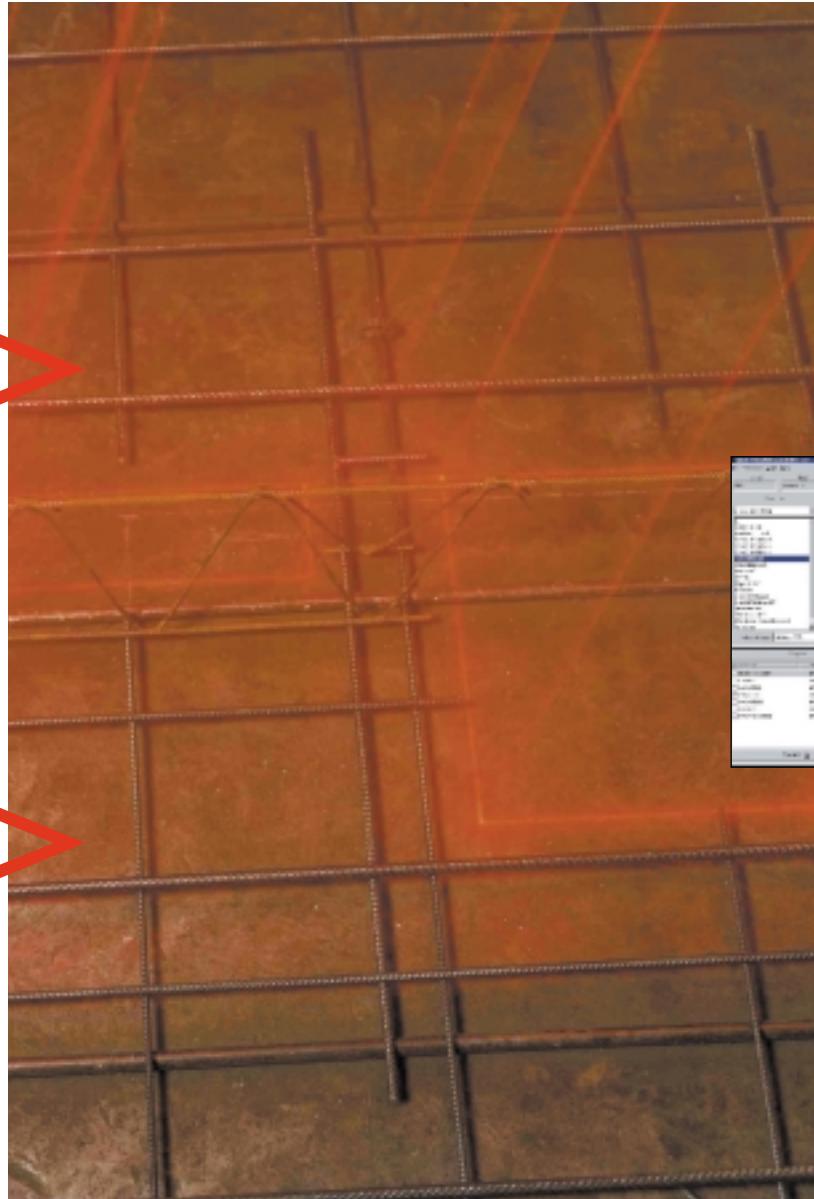


# Virtek • LTG (Laser Template Generator)

CONCRETE SLAB AND REINFORCEMENT MANUFACTURING THE EASY WAY

The LTG projects placement locations of wiring, piping, doors, windows etc with  $\pm 1/16$ " accuracy. Workers can see what the reinforcement looks like, and how it fits in the form before they begin production.

Virtek LTG projects an exact template for concrete slab and reinforcement manufacturing of any configuration or complexity. It even shows multiple layers.



▲ The LTG system includes Windows®-based software that is both intuitive and easy to use.

**VIRTEK**

## AFFORDABLE TECHNOLOGY

Virtek LTG is the perfect solution for concrete slab manufacturers. Offering many of the same key features as Virtek's world-renowned TrussLine® system, the LTG system lets you benefit from Virtek's leading edge templating technology to lower your manufacturing costs.

## EASY TO USE

Virtek LTG makes concrete slab and reinforcement manufacturing so easy that even less experienced workers can become productive immediately. The system projects a laser template of the reinforcement or concrete slab to be built onto the work surface, highlighting the position and shape of all important parts and rulers - eliminating the need for measuring, squaring, and stringing. Even the most complex slabs can be set up in minutes. You'll save time and money on production, supervision and training, as the system is easy to learn.

## HIGHER THROUGHPUT

The Virtek LTG reduces set up and changeover time by up to 70%, and increases productivity by up to 25% – even with less skilled labor!

Flexible production control makes it easy to produce multiples or “one-of-a-kind” reinforcements or slabs quickly and easily. The result is increased manufacturing capacity and efficiency, and lower per unit costs.

## BETTER QUALITY

The LTG system is accurate to within  $\pm 1/16$ " reducing measurement errors and rework.

## FLEXIBLE SOFTWARE

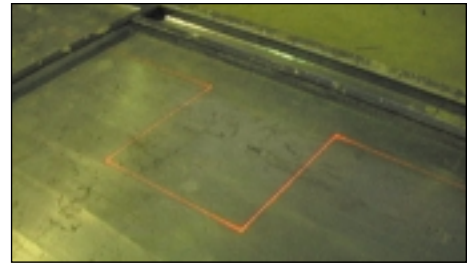
Windows-based LTG interfaces with the leading design software packages, maximizing your existing design software investment.

## WORLDWIDE ACCEPTANCE

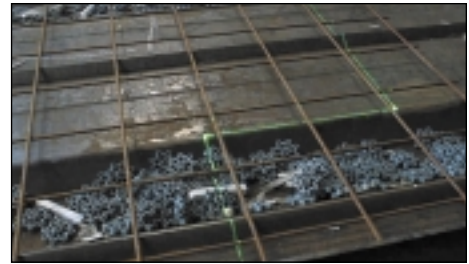
Virtek's laser templating products have been successfully installed in hundreds of locations around the world. Users of this proven technology report impressive increases in efficiency, productivity, and quality. The system also decreases the level of skilled labor required.

## SYSTEM SPECIFICATIONS

Position Accuracy . . . . .	$\pm 1/16$ " over 14' x 20' area
Laser Line Width . . . . .	0.030" at 15'
Laser Device & Output. . . . .	Visible laser diode device with less than 5mW maximum output
Laser Class . . . . .	Class IIIa, meeting the 21 CFR 1040 standard for CDRH certification in North America Class 2M, meeting the 60825-1:1993+A1:1997+A2:2001 for CE certification in Europe
Projection Systems . . . . .	Multiple fixed head units available
Computer System . . . . .	PC, 17" SVGA monitor, parallel port and mouse
Operating System . . . . .	Windows®
Options . . . . .	Computer enclosure (NEMA compliant), Uninterruptible Power Supply (UPS)
Power Requirements . . . . .	115 - 230 VAC 60/50 Hz
Customer Support . . . . .	Installation, Training, Documentation One-year, all-inclusive warranty on hardware and software Extended hardware and software support options available



▲ Setting the rulers with magnets so the laser line passes through the crosshair on top of the ruler.



▲ LaserLTG highlights the position and shape of all reinforcement contours.



▲ Precision location of parts on working tables.

To learn more about how Virtek LTG can maximize efficiency, increase quality, and reduce the costs of concrete slab and reinforcement manufacturing, call **1-800-684-7835** or e-mail [virtekltg@virtek.ca](mailto:virtekltg@virtek.ca).



785 Bridge Street, Waterloo, Ontario  
Canada N2V 2K1

Toll Free: 1.800.684.7835  
Tel: (+1) 519.746.7190  
Fax: (+1) 519.746.3383

[www.virtek.ca](http://www.virtek.ca)

\*Specifications subject to change due to continual improvements.