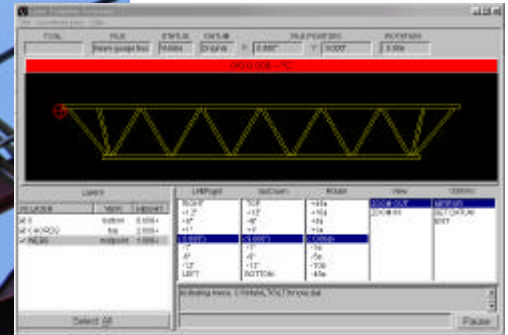
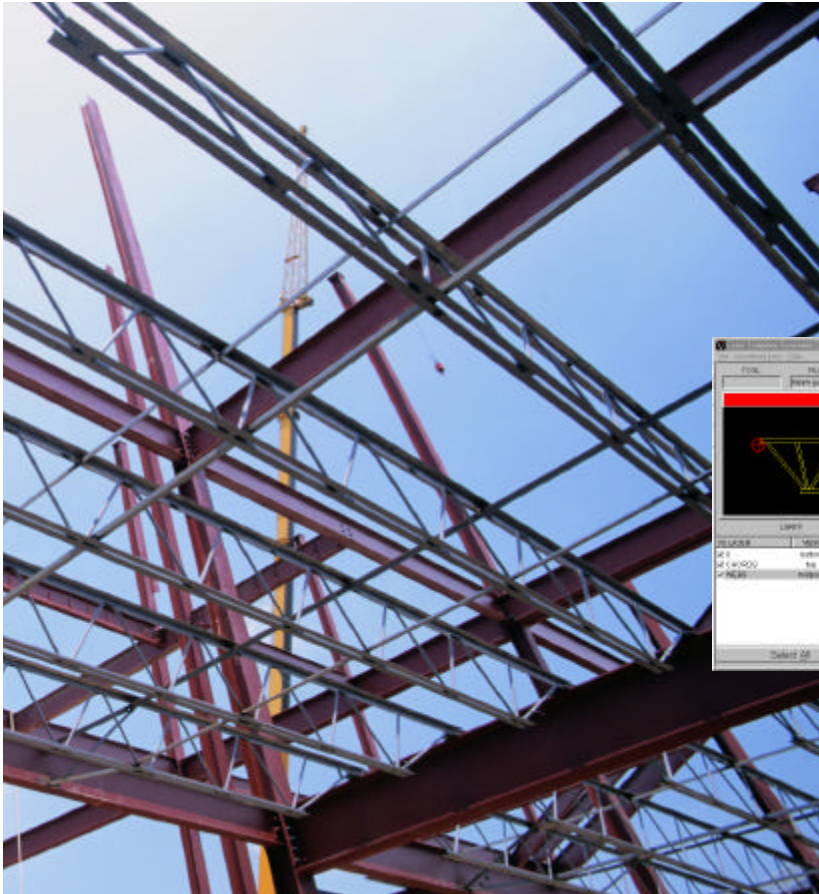


Virtek • LTG

THE PRODUCTIVITY SOLUTION FOR HEAVY GAUGE STEEL CONSTRUCTION



Virtek LTG software is compatible with all leading CAD software programs.



Virtek's laser projection systems have revolutionized the manufacture of wood and steel roof trusses in the prefabricated construction industry. Now, the heavy gauge steel construction industry can maximize profit and efficiency using the advanced technology of Virtek. The Virtek LTG system projects a template that shows operators the exact location of all important features in each structural steel component or assembly. Virtek LTG can be used to project templates of assemblies such as trusses or details of individual members such as beams and columns.

REDUCED SET UP TIME

Set up and changeover time can be reduced by up to 70%, since workers can see how the structure will be assembled before they begin. Using the projected laser line template, even less skilled workers can jig and build complicated steel structures. LTG accounts for the length, height and depth of all components and virtually eliminates the need for measuring, squaring and stringing.

FLEXIBLE PRODUCTION CONTROL

Respond to your customers' needs. Reduce lead times. Build standard structures or one-of-a-kinds quickly and easily. Project single or multiple structures. With less than an hour's training, LTG's user friendly interface will allow less experienced workers to build complicated structures with ease.

IMPROVED PRODUCT QUALITY

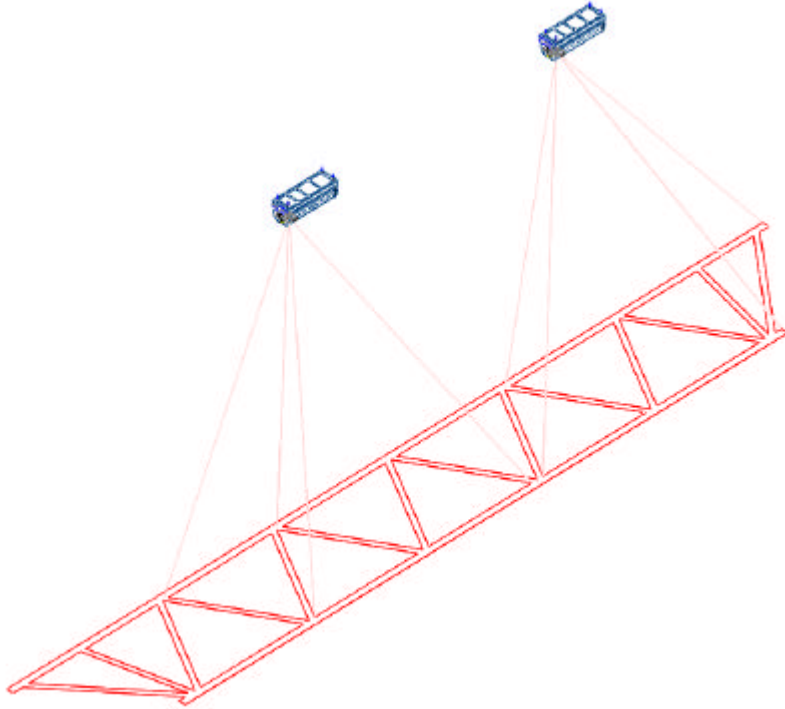
Maintain consistent quality. LTG's pinpoint accuracy ensures precision is built into every structure. Your customers will notice the difference.

SYSTEM DESCRIPTION

The system comes with one or more laser projectors mounted above the manufacturing area plus a computer used for operator interface, laser control and calibration. The projectors are installed above the work surface. Each projector covers up to 6m x 6m (20 feet x 20 feet) of the work surface.

RELIABILITY

The LTG system is designed to require very little customer maintenance. It comes with a standard one year parts and labor warranty. Free software upgrades are included for one year.



SYSTEM SPECIFICATIONS

Position accuracy	+/- 1.5mm over 6m x 6m area (+/- 1/16" over 20' x 20' area)
Laser line width	0.8mm at 4.5m (0.030" at 15')
Laser device & output	Visible laser diode device with less than 5mW maximum output
Laser class	Class IIIa, meeting the 21 CFR 1040 standard for CDRH certification in North America Class 3R, meeting the 60825-1:1993+A1:1997+A2:2001 for CE certification in Europe
Projection systems	Multiple fixed head units available
Computer system	PC, 17" SVGA monitor, parallel port and mouse
Operating system	Microsoft Windows® 98, 2000, NT 4.0+
Options	Computer enclosure (NEMA compliant) Uninterruptible Power Supply (UPS)
Power requirements	115-230 VAC 60/50 Hz
Customer support	Installation, training, documentation One-year all inclusive warranty on hardware and software

