



## Virtek LaserEdge® *planner*



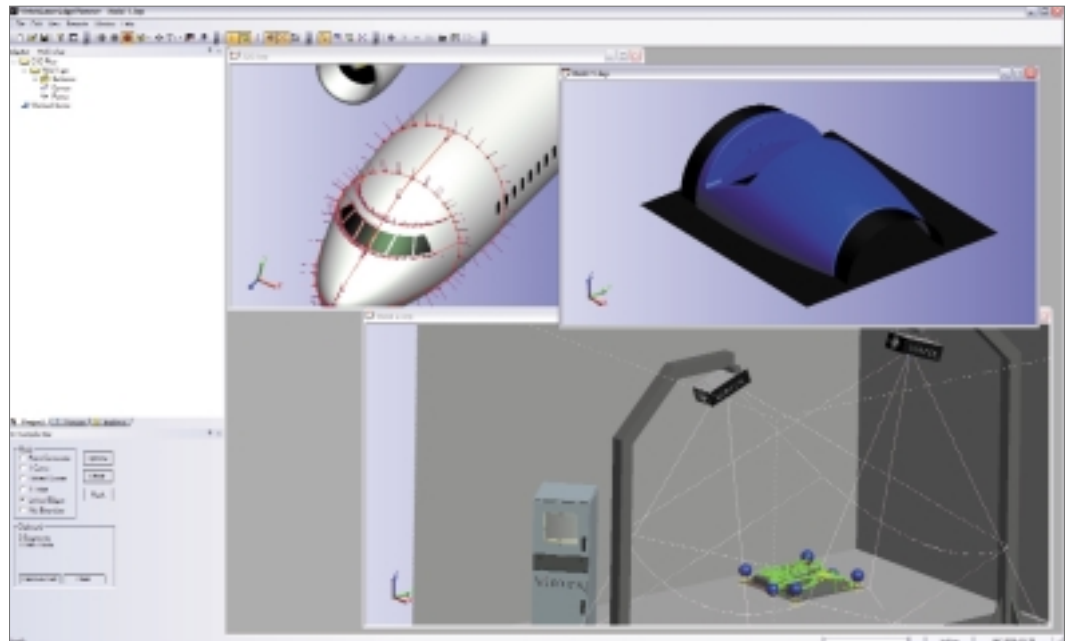
PRODUCTIVITY TOOLS FOR AEROSPACE TEMPLATING

**Bridge the gap between engineering CAD designs and precision laser assisted manufacturing processes**

**Work with precise 3D displays** of your CAD designs. Reduce the time required to bring them to reality with Virtek LaserEdge® PLANNER.

**Save significant time and eliminate errors** by enabling your manufacturing engineers to visualize, create, and edit data – directly from native CAD models in a virtual 3D environment.

**Eliminate time-consuming shop floor tests** with PLANNER's workcell simulation. Together with LaserEdge® projection systems, PLANNER removes the need for costly tests.



### **PLANNER Features:**

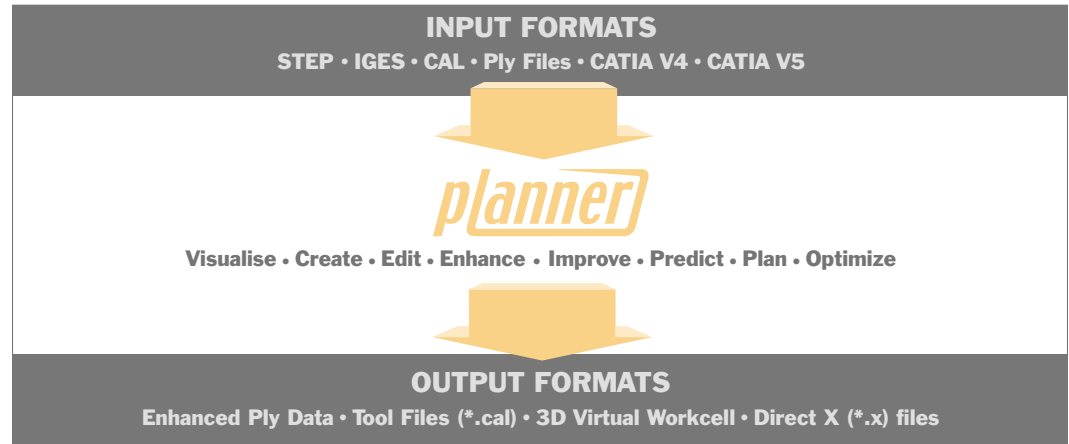
- Powerful visualization and simulation tools that save time by assessing the best use of projection resources.
- The ability to easily edit an existing ply or target file for content and sequence.
- Develop a new file from CAD data, and add non-projection process-enhancing elements to the work sequence.
- Extensive functionality ranging from ply file development and modification to planning of laser projection workcells and layout tools.
- Intuitive Windows®- style layout makes it easy to learn and use, even for people without CAD/CAM experience.

**PLANNER**  
provides the  
vision to see  
the final  
manufacturing  
process at the  
planning stage



**Imagine the advantage of actually seeing what you're working on – before you even get started.**

With LaserEdge® PLANNER, you can visualize CAD models of tools and parts as well as a virtual display of your workspace. PLANNER enables you to enhance legacy ply and target files to realize significant performance gains on the shop floor.



**PLANNER Advantages:**

**Intuitive, easy-to-use**

- Familiar, customizable Windows® - based work environment.
- Fast, precise navigation with keyboard, mouse or Spaceball.

**Visualize, create and edit**

- Read in CAD files from STEP, IGES, CATIA V4 and V5 formats (featuring native CATIA layer recognition).
- Visualize laser control data in .ply and .cal formats.

**Enhance and improve**

- Create ply data by integrating the CAD for points, edges and surfaces.
- Reduce time and effort by employing automated selection routines.
- Turn your ply file into a genuine electronic ply book.

**Predict, plan and optimize**

- Visualize the process sequence, including all projected and non-projected items in the ply files, just as LaserEdge will interpret them in production.
- Create and re-use 3D models of your workcell to predict the behavior of your projection hardware in the work area.
- Complete the work instructions, queries and manufacturing aids early on.
- Optimize the use of your manufacturing resources.

**North America**

785 Bridge Street,  
Waterloo, Ontario  
Canada N2V 2K1

Tel: (+1) 519.746.7190  
Toll-Free: 1.800.684.7835  
Fax: (+1) 519.746.3383

**Europe**

Altenaer Strasse 170,  
Lüdenscheid  
Germany D-58513

Tel: +49 (0) 2351.996.218  
Fax: +49 (0) 2351.996.269

[www.virtek.ca](http://www.virtek.ca)



**GLOBAL LEADER IN LASER TEMPLATING**